

Ethernet Family

10/100Mbps Ethernet Bridge ET100

Ethernet network connections over 2Mbps lease lines

The ET100 Network Bridge is a high performance remote, self-learning, Ethernet bridge. Its compact size and low cost makes it ideal for cost-sensitive bridging applications or as a LAN extender or segmenter over bit stream type infrastructures. The built-in n x 64(56) Kbps timing clock generator makes it easy to connect to other n x 64(56) Kbps related data equipment. Several options of data interfaces, including V.35, RS-530, RS-449, X.21 and RS-232, make this unit's connection between 10Base-T and 100Base-TX LAN and various dataport interfaces convenient.



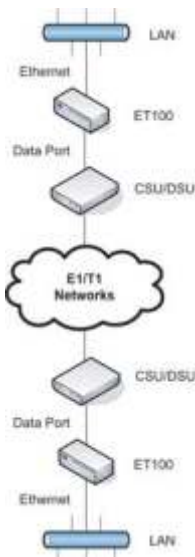
Features

- Automatic LAN table learning and aging
- Auto-MDI/MDIX detects and corrects crossed cable
- Built-in n x 64K / n x 56K timing clock generator for Sync WAN link
- IEEE 802.3x flow control
- High performance bridge for 10Base-T or 100Base-TX Ethernet extension
- Selectable data port interfaces: V.35, RS-530, RS-449, X.21, and RS-232. (with cable adapters)
- Transparent half / Full duplex support on WAN / LAN interface

Specifications

Standard	IEEE 802.3/10Base-T, IEEE 802.3u/100Base-TX	
Connector	RJ-45	
Bridge	LAN Table	256 MAC address with 5 minute automatic aging
	Filtering and Forwarding	15,000 frame/sec
	Buffer	256 frames
	Delay	1 frame
LEDs	LAN/ WAN Link and activity status	
Power	DC	9VDC
Environment	Temperature	0 — 50°C (Operating); -20 — 65°C (Storage)
	Humidity	0 — 90% non condensing
Power Consumption	<5W	
Dimensions(WxDxH)	7.9mm x 13.5mm x 2.5mm	
Weight	150g	
Compliance	FCC, CE	
MTBF	TBA	

Application



Ordering Info

Model Number	WAN (Dataport)	LAN Port
ET100/ V35	V.35 Interface	10/100Base-TX
ET100/ X21	X.21 Interface	10/100Base-TX
ET100/ 530	RS-530 Interface	10/100Base-TX
ET100/ 449	RS-449 Interface	10/100Base-TX
ET100/ 232	RS-232 Interface	10/100Base-TX